

[FYDO Hospital Update - 04/07/2024](#)

Additions to the DRG Fee Set Up

To assist with complex DRG Health Fund contracts, we have implemented additional fields to improve our simplified billing. There are now 3 steps down fields available for Long Stay 'LS' with 'from' and 'to' days.

DRG	Sameday Rate	IP Rate	SS Trim	SS Fee	LS 1 From	LS 1 To	LS 1 Fee	LS 2 From	LS 2 To	LS 2 Fee	LS 3 From	LS 3 To	LS 3 Fee	TFR Trim	TFR Disc
801A	1,000.00	2,000.00	1	500.00	10	15	400.00	16	20	300.00	21	25	200.00	0	0.00

Additions to the Length of Stay Report

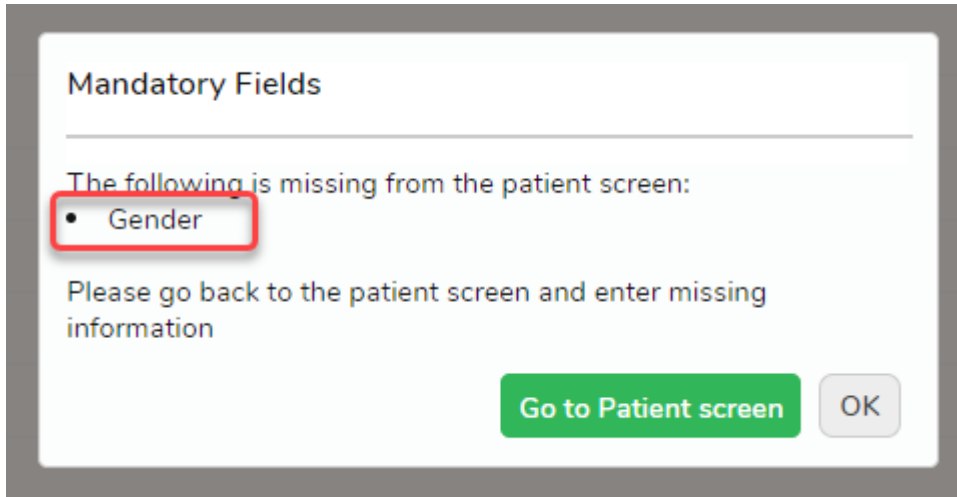
The Length of Stay Report can now be generated based on **Booking Time** to **Pre-Op Time**.



Additions to Mandatory Fields

Gender has been added as a mandatory requirement for WA, VIC and TAS submission. If the 'On admission, make patient fields mandatory' feature is enabled in your System Configuration, a warning will pop up if this is missing from the patient screen on admission.

- Allow referral to be entered without a referral date/period
- Alert when referral expired when editing an appointment
- Invoicing only allowed if 'Theatre Completed'
- On admission, make patient fields mandatory**
- On admission, alert to take excess if not yet collected
- Theatre Roster required when making bookings
- Invoicing only allowed if 'Episode Grouped'
- On admission, make Next of Kin mandatory
- On admission, make Emergency Contact mandatory



New Webhook Fields Added

Episode webhooks now have the PreAdmissionContacted and PostDischargeContacted fields with True or False values.

Bug Fixes

The issue some users were experiencing with amending the DVA Casebase Fee Set Up has been resolved.